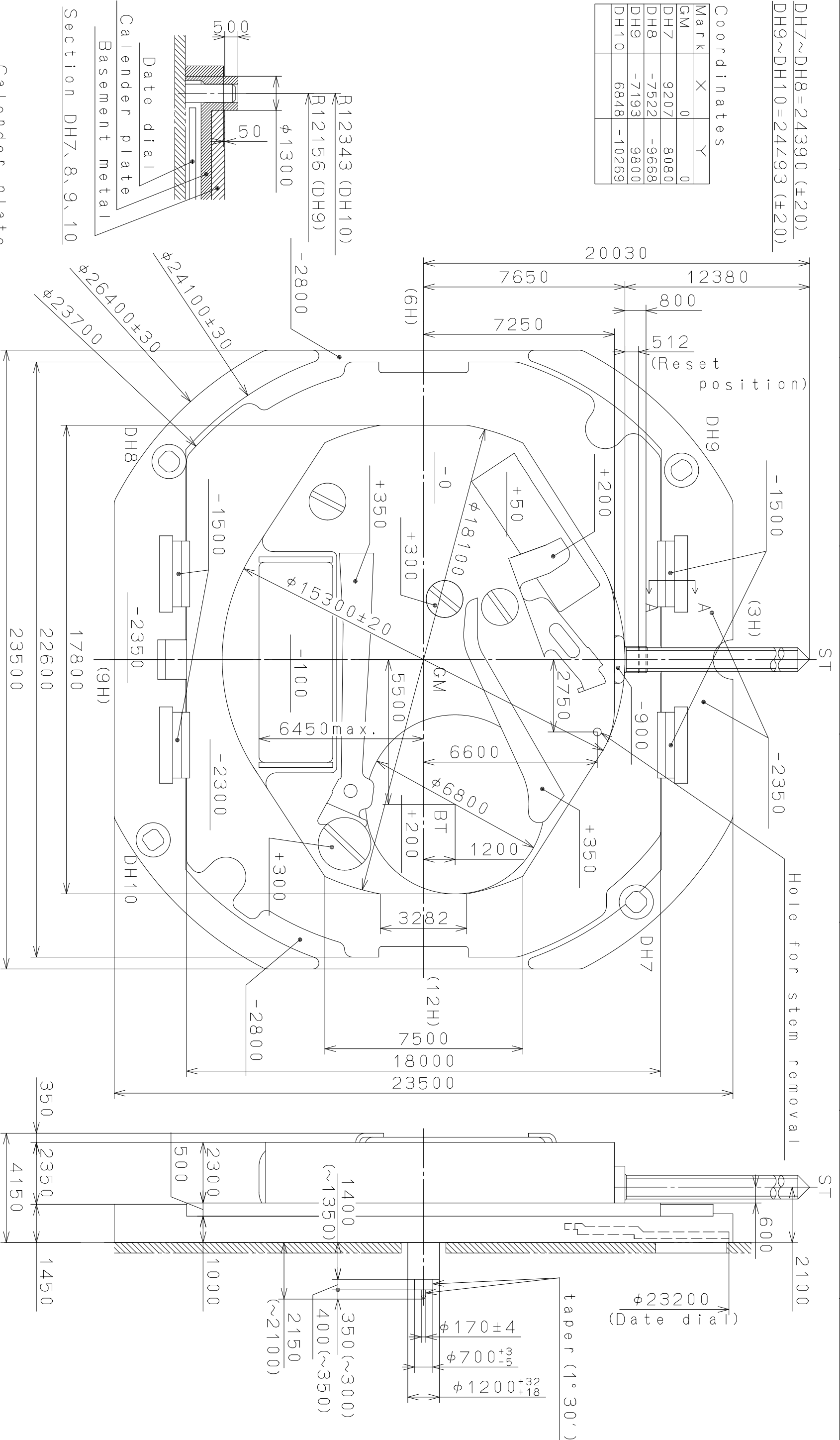


This drawing is provisional and subject to our reconfirmation and/or revision without notice.

| Coordinates | | |
|-------------|-------|--------|
| Mark | X | Y |
| GM | 0 | 0 |
| DH7 | 9207 | 8080 |
| DH8 | -7522 | -9668 |
| DH9 | -7193 | 9800 |
| DH10 | 6848 | -10269 |

DH7~DH8=24390 (±20)
DH9~DH10=24493 (±20)



Calendar plate

9530(GM~)

Basement metal

Date dial

Section A-A (other hook)

Date dial
Calendar plate
Basement metal

Section DH7, 8, 9, 10

R12343 (DH10)
R12156 (DH9)
 $\phi 1300$

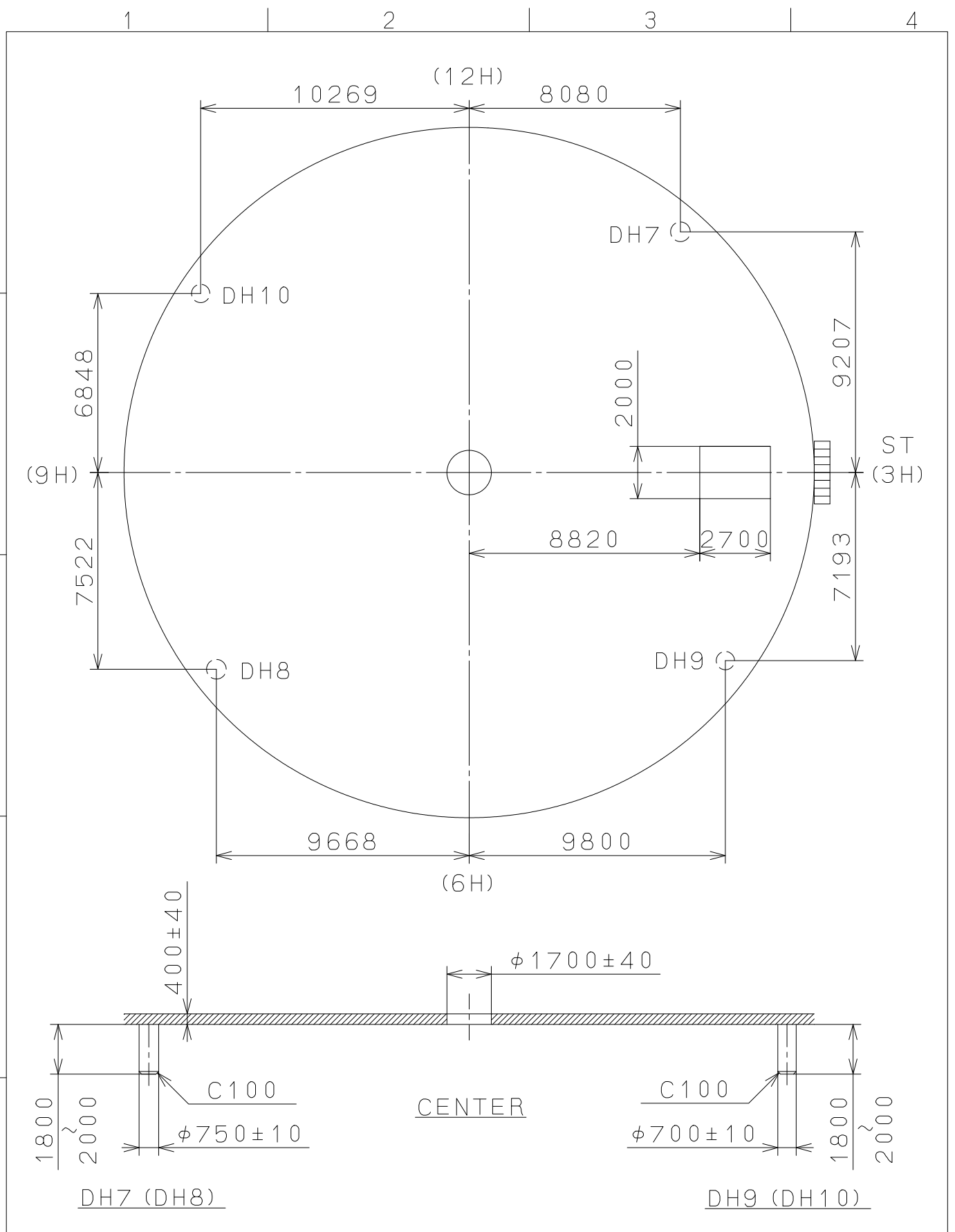
| Mark | Date | Description | Appro. | Checked | Name: |
|------|------|----------------|----------|---------|-----------------------|
| △ | | Alterations | Approved | | E. Murakami |
| △ | | Material | | | Frame for Case |
| △ | | Heat Treatment | | | Drawing No.: 2317C000 |
| △ | | Hardness | | | |
| △ | | Plating | | | |
| △ | | Quantity | | | Cal. NO.: 2317 |
| △ | | Unit | | | 1/1000 mm |
| △ | | Scale | | | 7:1 |
| △ | | Date | | | Parts No.: |
| △ | | Drawn | | | |

General Tolerances
Dimensions
Angles

MIYOTA

CITIZEN WATCH CO., LTD. TOKYO, JAPAN

This drawing is provisional and subject to our reconfirmation and/or revision without notice.



| | | | | | |
|----------------|------|-------------|--------------------|---|-----------------------|
| △ | | | Quantity | | Cal.NO.: |
| △ | | | Unit | 1/1000mm | 2317-20A |
| △ | | | Scale | 5:1 | Parts No.: |
| △ | | | Date | | |
| △ | | | Drawn | | |
| Mark | Date | Description | Appr. | Checked | Name: |
| | | Alterations | Approved | E. Murakami | Indications for Dial |
| Material | | | | | Drawing No.: 2317D000 |
| Heat Treatment | | | General Tolerances | MIYOTA CITIZEN WATCH CO., LTD. TOKYO, JAPAN | |
| Hardness | | | Dimensions | | |
| Plating | | | Angles | | |